

Test Certificate No.: 10425_CN
 Sample: THRIVE0716
 Matrix: Concentrate

Customer: Jason Hand
 Vape Bright
 Encinitas, CA
 818-940-5405

Date Received: 7/8/2016
 Test Date: 7/13/2016
 Technician: LA/JFD

CANNABINOID PROFILE [Procedure WI-10-04]:

This test method was performed in accordance with the requirements of ISO/IEC 17025. These results relate only to the test article listed in this report. Reports may not be reproduced except in their entirety.

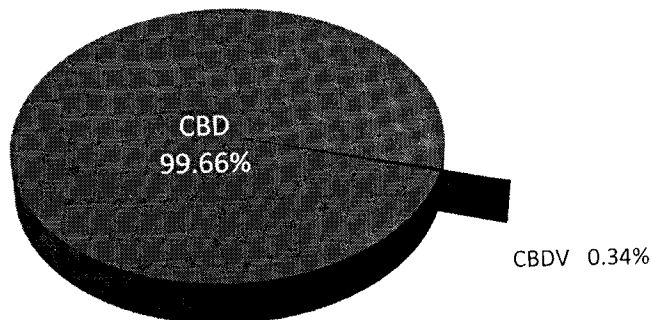


Total Cannabinoids Measured

Test	Weight %	Conc.
CBD	46.04%	460.40 mg/g
THCV	< 0.01%	< 0.10 mg/g
Δ9-THC	< 0.01%	< 0.10 mg/g
CBC	< 0.01%	< 0.10 mg/g
CBN	< 0.01%	< 0.10 mg/g
CBG	< 0.01%	< 0.10 mg/g
THCA	< 0.01%	< 0.10 mg/g
CBLA	< 0.01%	< 0.10 mg/g
CBGA	< 0.01%	< 0.10 mg/g
CBDV	0.16%	1.57 mg/g
Max THC	< 0.01%	< 0.10 mg/g
Max CBD	46.04%	460.40 mg/g
Total Active	46.20%	461.97 mg/g
Total	46.20%	461.97 mg/g

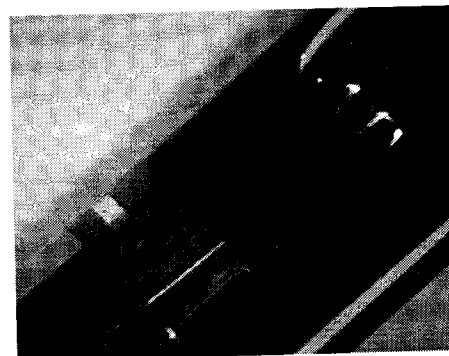
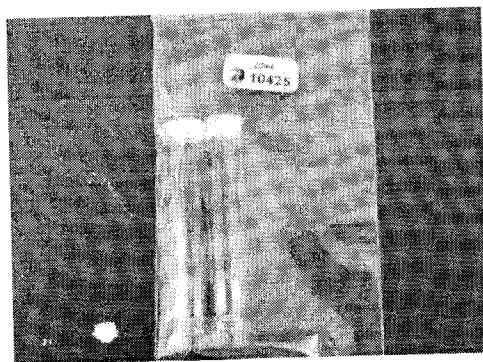
- CBD
- THCV
- D9-THC
- CBC
- CBN
- CBG
- THCA
- CBDA
- CBGA
- CBDV

Distribution of Cannabinoids

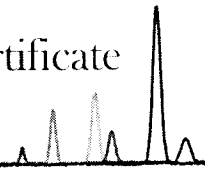


VISUAL AND MICROSCOPIC INSPECTION [Procedure WI-10-03]:

Inspection Comments: None



ProVerde Laboratories, Inc. 420 Fortune Blvd. Milford, MA 01757 617.221.3356	Christopher Hudalla, CSO	Date
		7/14/2016



Test Certificate No.: 10425_HM

Customer: Vape Bright
Jason Hand
Encinitas, CA

Date Received: 7/8/16
Test Date: 7/12/16
Technician: JFD

ELEMENTAL ANALYSIS [ICP-MS]:

This test method was performed in accordance with the requirements of ISO/IEC 17025. These results relate only to the test article listed in this report. Reports may not be reproduced except in their entirety.

Metal	Symbol	Conc. ¹ (µg/kg)	LLD (µg/kg)	Limits ² (µg/kg)
Arsenic	As	40.8	0.012	200.0
Cadmium	Cd	0.8	0.001	200.0
Mercury	Hg	0.8	0.014	100.0
Lead	Pb	56.3	0.002	500.0

- 1) ND = None detected to Lowest Limits of Detection (LLD)
- 2) MA Dept. of Public Health: Protocol for MMJ and MIPS, Exhibit 4(a) for all products.

ProVerde Laboratories, Inc. 420 Fortune Blvd. Milford, MA 01757 617.221.3356	Authorization: Christopher Hudalla, CSO	Date
	Signature: <i>Christopher Hudalla</i>	7/14/2016